

03/04/2023

Tudor House



Building	Tudor House		
Address	18 Manuel Court, Hackney, United Kingdom		
Postcode	LS9 0SG	Schedule Of Doors On Site	Yes
Number of Actions	1	Number of Pictures	1
Number of Doors	2	No. of Non Compliant Doors	1
First Survey Created	03/04/2023 09:52		
Last Survey Created	03/04/2023 10:15		

Fire Door Summary



Tudor House



01/04/2023 → 05/04/2023



Door Reference / Barcode	Date	Floor	Location	Comments	Compliance
DR0001	03/04/2023	First Floor	Warehouse B2	This is a comments field where you are able to summarise any important details about this door.	Not Compliant
DR0002	03/04/2023	Second Floor	Northwest corner of Warehouse B2	Door is compliant and in perfect condition. No minor or major defects visible as per time of inspection.	Compliant



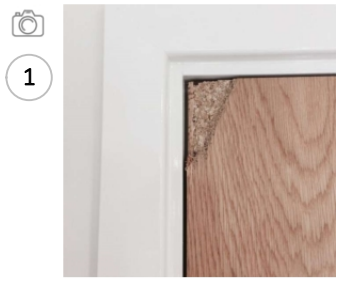
Potential Risk	Condition	Compliance	Corrective Actions
Medium	Grade C	Not Compliant	1

Door Reference	DR0001	Fire Resistance	Half hour fire resisting with smoke containment		
Door Type	Fire Door - Single Leaf	Width	1220	Height	1981
Location	Tudor House - First Floor - Warehouse B2				
Finish to Leaf	Painted	Finish to Frame	Painted		
Glazing	Fully Glazed	Material	Timber		
Letterbox	Yes	Spyhole	Yes		
Letterbox Seal	No	Spyhole Seal	Yes		

Does the Letter Box have an Intumescent Seal	No
Does the Spy Hole have an Intumescent Seal	Yes
Does the door have a closer fitted?	Yes
Notes <i>The door has a closed fitted well.</i>	
1. Can it be visually confirmed that the door is fire rated by suitable label located on the top or side of door?	Yes
2. If there is no label then can it be confirmed by investigation that the door is suitable to be used as a fire door?	Yes
3. Is the door and Frame free from damage including dents, open joints, chips and holes? This to include any removed old locks, latches, keeps or refitted or removed hinges and spy holes etc.	No

Notes

Corrective Action: FireDemoUser1: 0340-001		Reported Date: 03/04/2023
Findings: The door is damaged.		Due Date: 10/04/2023
Required Action: Replace this door.		Impact: Medium
		Probability: Medium
		Status: New



4. If the door is veneered or lipped, is the glue still holding these products firmly in place?	Yes
5. Is the door frame firmly attached to the wall?	Yes

6.	Are the fitted Intumescent seals free from paint or varnish?	Yes
7.	Are the Intumescent seals well attached inside the groove in the frame or door leaf?	Yes
8.	Are the Intumescent seals free from damage?	Yes
9.	If you have a brush or fin or acoustic type smoke seal, is it free from damage or breakage?	Yes
10.	Are the smoke seals continuous around the frame or door leaf, well attached within the groove and free from damage, paint or Varnish?	Yes
11.	Are the Fire Door Hinges marked with a "BS or EN" Number?	Yes
12.	Are there a minimum of 3 hinges with all the screws fitted?	Yes
13.	Are the hinges free from packing, are all screws fitted correctly and are the hinges free from metal fragments or oil leakage?	Yes
14.	Does the door leaf sit against the door stop, flush with the frame and is it free of distortion?	Yes
15.	Is the closer correctly attached to the door and frame?	Yes
16.	Is the closer free from damage and not leaking?	Yes
17.	Open the door to 5 degrees or 75mm. Does it close and engage with the latch and door stop?	Yes
20.	If latched does it hold the door firmly in place without ratting?	Yes
21.	If the doors are hung in pairs, do they close in line if both opened and released together?	Yes
22.	If a planted door stop is present, is it firmly attached?	Yes
23.	If applicable, do any "hold open" device release the door when required? (only electronically powered allowed)	Yes
24.	Is the frame to door leaf gap consistently 3mm? (tolerance of +/- 1mm)	Yes
25.	Measurement of Gap (Latch side) (mm)	3
26.	Measurement of Gap (Hinge side) (mm)	2.9
27.	Measurement of Top Gap (mm)	3.2
28.	Bottom Gap - Is the door to floor covering gap consistently 10mm or less when the door is closed?	No
29.	Measurement of Bottom Gap (mm)	13
Notes	<i>Any additional notes taken against this question are displayed here.</i>	
30.	Bottom Gap - Is there a consistent gap under the door that allows it to swing without touching the floor covering?	Yes
31.	If glazing panels are below 1500mm from the bottom of the door, is the glass safety glass and has a kite mark?	Yes
32.	Is there a visible intumescent seal between the Glass and Bead or its Rebate and is it continuous?	Yes
33.	Are the glazing beads well attached to the frame and free from damage?	Yes

34.	Is the glass free from damage and cracking?	N/A
35.	If the glass has been replaced, is it a fire rated glass?	N/A
36.	Is there correct signage (clearly indicating that it is a fire door so they should be kept shut)?	Yes
37.	If the fire door is to be kept locked shut has it a suitable sign fitted with the words "Keep Locked"?	N/A

Additional Comments

This is a comments field where you are able to summarise any important details about this door.



Potential Risk	Condition	Compliance	Corrective Actions
Low	Grade A	Compliant	0

Door Reference	DR0002	Fire Resistance	One hour fire resisting		
Door Type	Fire Door - Single Leaf	Width	1220	Height	1980
Location	Tudor House - Second Floor - Northwest corner of Warehouse B2				
Finish to Leaf	Clear	Finish to Frame	Painted		
Glazing	Half Glazed	Material	Timber		
Letterbox	No	Spyhole	No		
Letterbox Seal	N/A	Spyhole Seal	N/A		

Does the door have a closer fitted?		Yes
1.	Can it be visually confirmed that the door is fire rated by suitable label located on the top or side of door?	Yes
2.	If there is no label then can it be confirmed by investigation that the door is suitable to be used as a fire door?	Yes
3.	Is the door and Frame free from damage including dents, open joints, chips and holes? This to include any removed old locks, latches, keeps or refitted or removed hinges and spy holes etc.	Yes
4.	If the door is veneered or lipped, is the glue still holding these products firmly in place?	Yes
5.	Is the door frame firmly attached to the wall?	Yes
6.	Are the fitted Intumescent seals free from paint or varnish?	Yes
7.	Are the Intumescent seals well attached inside the groove in the frame or door leaf?	Yes
8.	Are the Intumescent seals free from damage?	Yes
9.	If you have a brush or fin or acoustic type smoke seal, is it free from damage or breakage?	Yes
10.	Are the smoke seals continuous around the frame or door leaf, well attached within the groove and free from damage, paint or Varnish?	Yes
11.	Are the Fire Door Hinges marked with a "BS or EN" Number?	Yes
12.	Are there a minimum of 3 hinges with all the screws fitted?	Yes
13.	Are the hinges free from packing, are all screws fitted correctly and are the hinges free from metal fragments or oil leakage?	Yes
14.	Does the door leaf sit against the door stop, flush with the frame and is it free of distortion?	Yes

15.	Is the closer correctly attached to the door and frame?	Yes
16.	Is the closer free from damage and not leaking?	Yes
17.	Open the door to 5 degrees or 75mm. Does it close and engage with the latch and door stop?	Yes
19.	If unlatched, does the closer hold the door in line with the frame?	Yes
21.	If the doors are hung in pairs, do they close in line if both opened and released together?	Yes
22.	If a planted door stop is present, is it firmly attached?	Yes
23.	If applicable, do any "hold open" device release the door when required? (only electronically powered allowed)	Yes
24.	Is the frame to door leaf gap consistently 3mm? (tolerance of +/- 1mm)	Yes
25.	Measurement of Gap (Latch side) (mm)	3
26.	Measurement of Gap (Hinge side) (mm)	3
27.	Measurement of Top Gap (mm)	3
28.	Bottom Gap - Is the door to floor covering gap consistently 10mm or less when the door is closed?	Yes
31.	If glazing panels are below 1500mm from the bottom of the door, is the glass safety glass and has a kite mark?	Yes
32.	Is there a visible intumescent seal between the Glass and Bead or its Rebate and is it continuous?	Yes
33.	Are the glazing beads well attached to the frame and free from damage?	Yes
34.	Is the glass free from damage and cracking?	Yes
35.	If the glass has been replaced, is it a fire rated glass?	Yes
36.	Is there correct signage (clearly indicating that it is a fire door so they should be kept shut)?	Yes
37.	If the fire door is to be kept locked shut has it a suitable sign fitted with the words "Keep Locked"?	N/A

Additional Comments

Door is compliant and in perfect condition.
No minor or major defects visible as per time of inspection.